



# LRRETA NEWS



*The equestrian contingent of the Lone Star Trail Building School. Front row: Vicki Fraser, Carol Nichols, Linda Moore. Back from left: Tracy Matern, Michelle Ellis, Mary Apple, Brigitte Caperton, Chuck Manning, Janis Janes (TETRA) and Barbara McKnight (TETRA). See story on page 6.*

## LRRETA BOARD OF DIRECTORS

Linda Moore, President, City and TPWD Liaison (940) 206-9355 [moorelinda741@gmail.com](mailto:moorelinda741@gmail.com)  
 Michelle Ellis, Vice President (214) 491-7941 [justme.always@ymail.com](mailto:justme.always@ymail.com)  
 Tim Beaty, Treasurer (214) 212-1999 [tbeaty@tbbuilders.com](mailto:tbeaty@tbbuilders.com)  
 Eileen Stecik, Secretary/Membership Chairperson 940-390-0393 [texasles@juno.com](mailto:texasles@juno.com)

## MARKETING, PR AND MEMBERSHIP

Fred Rudsenske (214) 417-3344 [skiquest@sbcglobal.net](mailto:skiquest@sbcglobal.net)  
 Carol Nichols (214) 507-9751 [carolintexas@aol.com](mailto:carolintexas@aol.com)  
 James & Katherine Stone (817) 454-8740 [katherine@twinstarfarms.com](mailto:katherine@twinstarfarms.com)  
 Monica Millan-Barbera (817) 915-8455 [monica@blackmustangranch.com](mailto:monica@blackmustangranch.com)  
 Tracy Matern (214) 392-2288 [tmatern1945@gmail.com](mailto:tmatern1945@gmail.com)

## EVENTS

Chuck Manning (940) 390-9188 [chucksterman@hotmail.com](mailto:chucksterman@hotmail.com)  
 Linda Moore (940) 206-9355 [moorelinda741@gmail.com](mailto:moorelinda741@gmail.com)  
 Gail Cotton (214) 356-8523 [gailcotton@verizon.net](mailto:gailcotton@verizon.net)  
 Monica Millan-Barbera (817) 915-8455 [monica@blackmustangranch.com](mailto:monica@blackmustangranch.com)

## GRANTS

Linda Moore (940) 206-9355 [moorelinda741@gmail.com](mailto:moorelinda741@gmail.com)  
 Lynn Jaco (214) 995-9215 [lynnjaco@yahoo.com](mailto:lynnjaco@yahoo.com)  
 Tracy Matern (214) 392-2288 [tmatern1945@gmail.com](mailto:tmatern1945@gmail.com)

## TRAIL STEWARDS

Blair Kenley (940) 536-8780 [blairkenley@yahoo.com](mailto:blairkenley@yahoo.com)  
 Chuck Manning (940) 390-9188 [chucksterman@hotmail.com](mailto:chucksterman@hotmail.com)

## NEWSLETTER

Leah Fry (972) 742-9019 [mljintex@yahoo.com](mailto:mljintex@yahoo.com)

## IN THIS ISSUE

President's Message ..... 2  
 Meet the Ranger..... 3  
 Outstanding Volunteer ..... 3  
 Projects Status ..... 4  
 Trail Building School ..... 6  
 Spring ETS Events ..... 8

### Monthly Trail Ride

1st Saturday of the Month  
 Meet 9am at Isle du Bois,  
 Lake Ray Roberts Park  
 Call before you haul!  
 Michelle Ellis  
 214-491-7941

### Monthly Work Day

1st Sunday of the Month noon-4  
 Meet at Isle du Bois,  
 Lake Ray Roberts Park  
 Call Michelle Ellis 214-491-7941  
 or Chuck Manning 940-390-9188  
 to confirm plans.

### Please join LRRETA, TETRA & CTETA

United, we are a powerful force  
 for equestrian trails in Texas.  
*See page 12 for details.*

**Your purchases can help  
fund our trails**



Visit <http://smile.amazon.com>  
 and designate Greenbelt Alliance  
 of Denton County as your charity.  
 Every time you make a purchase,  
 they donate .05% of the  
 purchase price. It adds up!

## President's Message



It's nearly spring! Or, did we even have winter? In any event I know many of us have been out there riding and taking of advantage of this great weather and enjoying our trails. It's only going to get better as we enter "Prime Riding Time".

We have been a busy group as evidenced by the articles in the newsletter. I appreciate all the great members who put in the time to improve the trails and make our organization effective. We have an upcoming meeting on Tuesday, March 14<sup>th</sup> at Ernesto's. I hope to see many of you there. The Board meetings are on the second Tuesday of the month at Ernesto's in Pilot Point. **The Board of Director's meetings are open to all members and friends.** So if you want to be "in the know", come join us! There is a list of upcoming meetings and workdays later in the newsletter.

In case you haven't heard we are hosting another Equine Trail Sports event to raise money for our projects. On April 1, 2 we will have an Obstacle and Trail Challenge once again at Elm Fork. We might be lucky enough to ride the trail down to FM428, but NO guarantees at this point. Brad Barker and his assistant are working on fixing the muddy areas with the True Grid Paver system LRRETA just purchased so that they can then get equipment all the way down the trail to fix the eroded areas. **GO BRAD!**

Speaking of the trail challenge we have just embarked on a new partnership with the Equine Program at NCTC in Gainesville. Becky Terrell, instructor, has invited us to recruit her students to become certified judges and LRRETA in turn will make a donation to their program. Very excited to have these young equestrians on board! There will be a judges' clinic on March 25<sup>th</sup> at NCTC to certify judges. If you too are interested in judging, please contact me! This will allow some of LRRETA judges to ride in the event!

We are planning workdays and our focus will be to get FM428 open and complete the trail markers. We have made excellent progress but we need you! I can find a job for everyone!

## LRRETA Partners with NCTC for ETS Event



We are very excited to have six students from North Central Texas College (NCTC) in Gainesville partnering with us for our Spring ETS Field Obstacle and Trail Challenge on April 1, 2, 2017. We appreciate the work of Becky Terrell, Equine Program instructor, in making this opportunity available to her students.

On February 28<sup>th</sup>, Linda Moore, LRRETA President, and Diana Hobbs, LRRETA member, visited Ms. Terrell's classroom to make a presentation about LRRETA and the upcoming trail challenge. These equine major students are involved in various collegiate competitions and need funds for their events. LRRETA wanted to recruit more judges for the ETS events so that more LRRETA members can compete rather than judge the event. LRRETA will make a donation to NCTC based on the number of NCTC judges who complete the process and judge the ETS event. NCTC volunteered to host the judges' clinic on Saturday, March 25<sup>th</sup> at the equine facility at 1525 California, NCTC Gainesville at noon. There is an obstacle course already available there!

These students will study and take the online test and then participate in the hands-on judging event on March 25<sup>th</sup>. Go to [www.EquineTrailSports.com](http://www.EquineTrailSports.com) and **sign up if you are also interested in becoming a judge!** We ask all LRRETA members to support this fundraiser by judging, assisting, or competing in the event. Funds raised will go towards our trail and trailhead projects.

LRRETA members are also encouraged to meet the students on March 25<sup>th</sup> for a pizza lunch.

*See page 8 for more details!*

## UPCOMING EVENTS

**April 1, 2, 2017**

**Elm Fork Trail head**

**ETS event** (see details on page 8)

**May 4, 2017**

**Isle duBois**

**Little Blue Stem trailhead**

**Equicaching**

**June 3, 2017**

**FM 428 Trailhead**

## LRRETA Board Meetings (Open to all members & Guests)

**2nd Tuesday of the Month**

**Ernesto's (YUM!)**

**10279 FM 455 E. #100**

**Pilot Point, TX 76258**

**6:30pm.**

## UPCOMING LRRETA MEETINGS & WORKDAYS

### Meetings:

March 14th

April 11th

May 9th

June 13th

July General Mtng. TBD

August TBD

September TBD

October TBD

November TBD

December TBD

### Work Days:

April 2nd

May 7th

June 4th

July TBD

August TBD

September TBD

October TBD

November TBD

December TBD

### LRRETA/TETRA Dual Members

Chuck Manning, TETRA Region 4 Director; Linda Moore; Carol Nichols; Tracy Matern, Michelle Ellis

### CTETA/TETRA Dual Members

Diana Hobbs, Linda Moore; Vicki Fraser, Robyn Pucci, Michelle Ellis

**We encourage LRRETA members to also join  
TETRA & CTETA (see page 12)**

## Meet the Ranger



**Brad Barker**

Brad holds a degree in natural resource management from the University of Texas Tech. He has spent several years working at The Nature Conservancy Arkansas as a wildland firefighter. He has experience working with quail, feral pigs, and removing a variety of invasive plant species.

Brad manages natural resources for the LRR Park Complex and manages the Greenbelt corridor. He loves working outside planning a variety of projects, including working with LRRETA to reopen the Greenbelt equestrian trail from FM455 south to FM428.

Brad hopes to re-open the entire Greenbelt for park customers to enjoy hiking, biking, horseback riding, kayaking, and a variety of other activities.

## Outstanding Volunteer



**Chuck Manning**

Chuck's first experience with horses involved hopping on a pony as a kid, being bucked off and kicked on the way down. Despite the rocky start, he says, "There's no place I'd rather be than on Boogie."

Besides his full-time job, Chuck is TETRA's Director of Region 4, a member of the Equine Master Plan Committee and the Equine Council of the Great Trinity Forest, and a volunteer with Journey to Dream. Chuck enjoys using his role in TETRA and his people skills to build stronger relationships among partners like Texas Parks and Wildlife and the US Army Corps of Engineers.

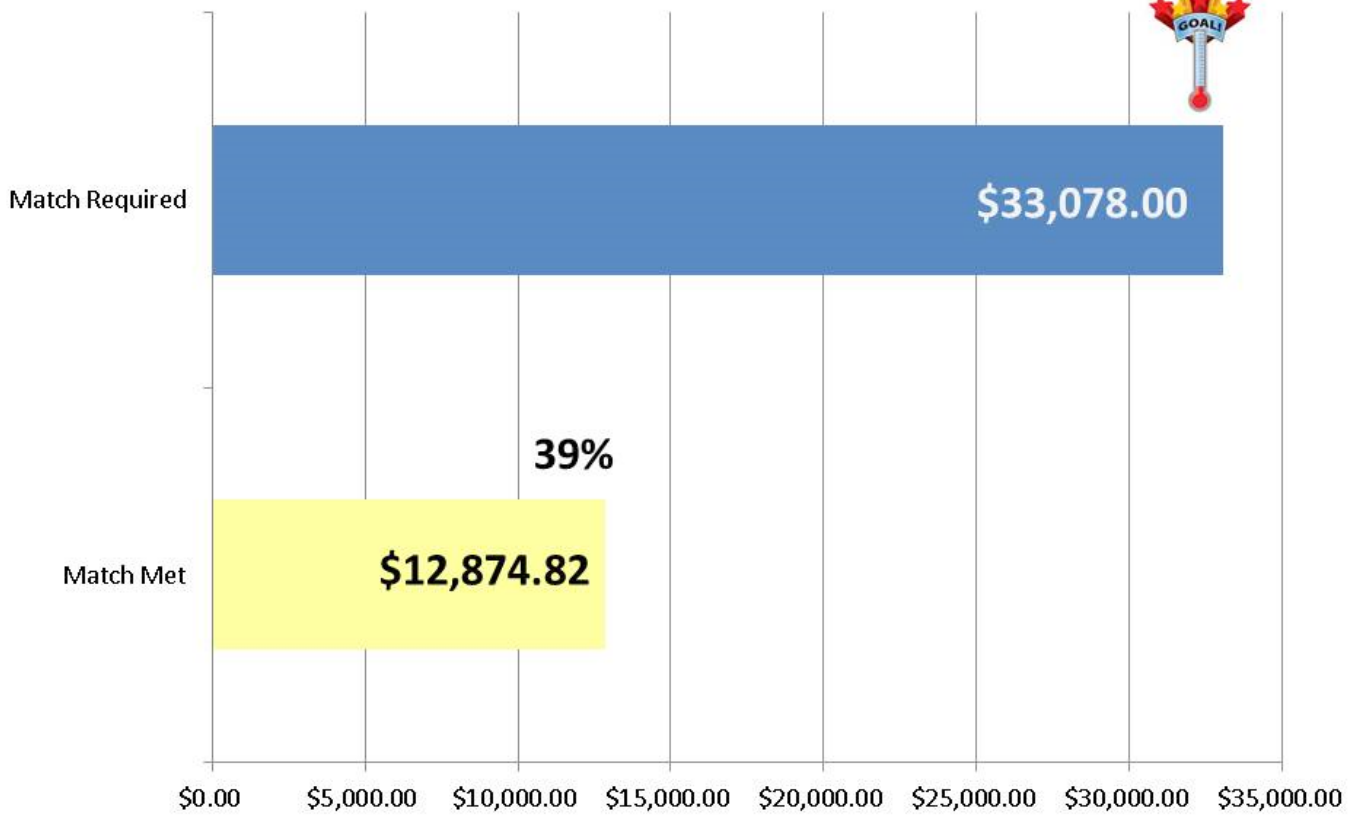
Chuck, LRRETA appreciates your kind, generous, willing spirit do to whatever it takes to get the job done.



**There is MUCH to be done on our beloved trails, but many hands make for light work. We NEED your volunteer hours to help us meet the grant match.**

Project	Location	Work to be Done	Complete Date
TPWD Grant 14013	trailhead 428	stain ramp	14-Dec-16
	trail 380 to 428	set signage posts/stickers	15-Feb-17
	trail 428 to 455	set signage posts/stickers	15-Feb-17
	trail 455 to Isle	set signage posts/stickers	15-Feb-17
	trail Isle to Jordan	set signage posts/stickers	31-Jan-17
	Jordan to Lost Lake	set signage posts/stickers	26-Dec-16
	trailhead Isle	stain ramp-2nd coat	15-Feb-17
	trailhead Jordan	stain ramp-2nd coat	15-Feb-17
	Blair Kenley's	build 5th ramp	4-Dec-16
Overnight Stalls	trail 455 to 428	trim trail	15-Feb-17
	trail 455 to 428	mow trail	15-Feb-17
	trailhead Isle du Bois	stain stall boards	1-Apr-17
		paint pipe	1-Apr-17
		caps on poles	Feb-17
		purchase c purlin & tubing	
		weld c purline & tubing	1-Apr-17
		intall roofs	1-Apr-17
		caulk roof installed	

### TPWD Matching Funds Progress



# There's always something happening with LRRETA! Join us!

## Christmas 2016 Ride & Potluck aka The Polar Bear Ride

Saturday, December 17th

The day the temps dropped more than 50 degrees!



## Workday - Monday, December 26 Isle du Bois

Brigitte and Samuel Caperton, Mindy Moore Lewis, Chuck Manning and Anna Diggs set 13 posts, picked up 2 sacks of trash and trimmed branches. It took 2 tractors, flatbed trailer, UTV and 9 hours to complete the task.

Brigitte said, "I certainly have gained a new (first hand) appreciation of the labor required to make improvements to our trails."



## Workday - Tuesday, January 31, 2017

### Isle du Bois

Mile markers were installed on the section of trail from the bridge up to Isle du Bois by LRRETA volunteers Paige & Linda Moore, Vicki Fraser and Ken & Jean Podbourny for dedicating an entire day of labor to the trails. The markers look great!



## Workday - Sunday, February 4, 2017

### Jordan Park

Crew number 3 installed markers from Jordan Park northward to Lost Lake. Hard work made pleasant by wonderful volunteers! A big thank you goes out to Fred Rudsenske, Jamie Earbes, Jeff Rupe, Chuck Manning and Michelle Maxwell Ellis. The "Trail-er" got it's debut. Proved to be a very handy little trailer!



# Lone Star Trail Building School Basic Course February 17-19, 2017 Sid Richardson Boy Scout Camp, Runaway Bay, TX

by Tracy Matern

Photos by Brigitte Caperton, Michelle Ellis and Chuck Manning

I signed up for this school, put on by Groundwork Dallas, S & S Trail Services, and Dirt Dojo with LRRETA friends Carol Nichols, Chuck Manning, Linda Moore, Michelle Ellis, Brigitte Caperton and Vicki Frasier. I looked forward to a lot of fun in addition to learning new things.

What I received was more than fun; it was remarkable.

I no sooner unloaded my gear when it was time to pile into a van to head to the Pronto Pizza Parlor in Bridgeport.



The restaurant did a great job of feeding all of us but it took a while so we all headed back to camp and bed.

After breakfast the following morning, the Basic class met in the conference center.



We learned about several organizations that are involved in and resources for trail building, including the PTBA, Professional Trailbuilders Association whose website is [www.sustainabletrailbuilders.org](http://www.sustainabletrailbuilders.org) and the IMBA, the International Mountain Bikers Assn. Also, the American Recreation Coalition [www.funoutdoors.com](http://www.funoutdoors.com), was mentioned (*See infographic on page 7*).

We learned basic terms for trail design including erosion, fall line, contours, grade reversals, sheet flow, flow of the

trail, tread, slope, grade and then the five design concepts, the half rule, the ten percent average guideline, maximum sustainable trail grades, grade reversals and out slope. We developed a whole new vocabulary!



After the presentation, we headed out to the trails to put what we had learned into practice.

It was hard work. By the end of the day, we were more than ready for dinner, a brief rest, then back out for an incredible night hike.

The following day, we headed out to the section of the trail we worked on the previous day and continued. We stopped mid-morning to clean up and pack up.

The head of Groundwork Dallas told us he was very impressed with the enthusiasm and the professionalism of the equestrian group. He thought the Mountain Biking groups could learn something from us and our ability to get money from grants. Carol suggested we get the top equestrian and mountain biking leaders in the state together to work for the common good, and combine our resources and talents. Overall, we learned we had more in common than we had differences.

---

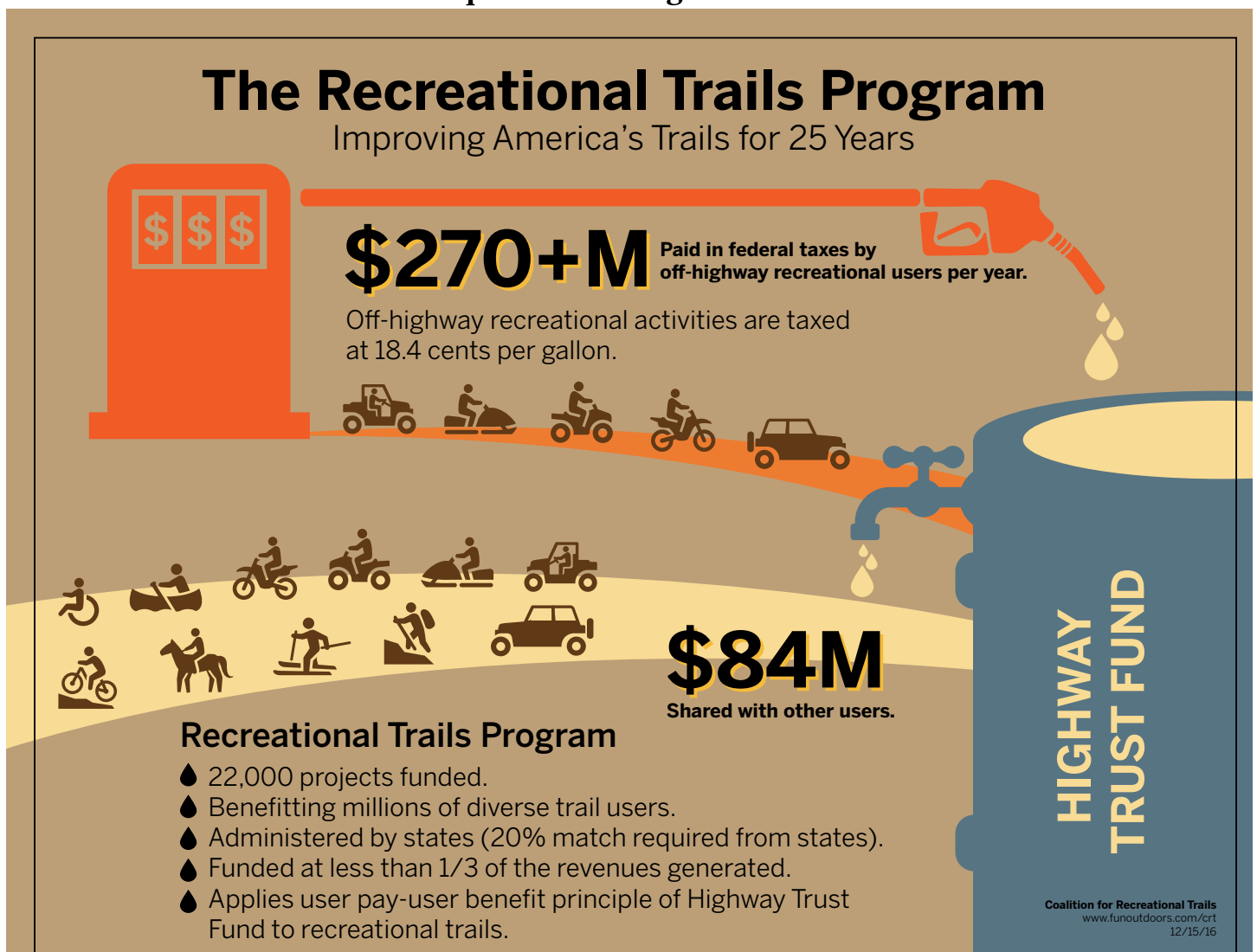
**Please get your online UTV  
and Chain Saw Safety Training  
for trail work!**

**ROHVA Safety E-Course: UTV training**  
<https://cvt.rohva.org>


**Chain saw Safety**  
<https://www.stihlusa.com> <https://www.stihlusa.com/information/videos>



This infographic was created by the American Recreational Coalition (ARC) to highlight the accomplishments of the Recreational Trails Program, describe how it is funded, and make the case for additional and more equitable funding.



The American Recreation Coalition (ARC) is a Washington-based nonprofit organization formed in 1979. Since its inception, ARC has sought to catalyze public/private partnerships to enhance and protect outdoor recreational opportunities and the resources upon which such experiences are based. ARC organizes and conducts national conferences and meetings and disseminates information regarding recreational needs and initiatives through a variety of means, including a monthly newsletter and its website [www.funoutdoors.com](http://www.funoutdoors.com). ARC also monitors legislative and regulatory proposals that influence recreation and works with government agencies and the U.S. Congress to study public-policy issues that will shape future recreational opportunities.



# EQUINE TRAIL SPORTS

**Ray Roberts Lake- Obstacle & Trail Challenge**  
**April 1-2, 2017 Aubrey, TX**

Saturday- Field Obstacle Course- 10 Obstacles/Sunday- 6 Mile trail Challenge- 6 Obstacles  
Hosted by: Lake Ray Roberts Equestrian Trail Association  
FM455 Elm Fork Trailhead - Ray Roberts Lake State Park, Aubrey, TX 76227

**WWW.EQUINETRAILSPORTS.COM**

**Spring ETS/LRRETA  
Obstacle and Trail Challenge-**  
**April 1-2, 2017**

**Judges' Clinic**  
**March 25<sup>th</sup> at NCTC**

Please join us in our second **Equine Trail Sports** event to raise funds to improve the trails and amenities at Lake Ray Roberts State Park. The event will start with a **Judges Clinic** on Saturday, March 25<sup>th</sup>, at 12 pm at the equine facility at NCTC. This is an opportunity to receive training (free) to become a judge. Lunch is compliments of LRRETA.

We are excited to have **six students and their instructor from NCTC in the equine program who will be training but the event is open to all.** If you would like to judge rather than compete, this training is for you! We are also recruiting four (4) riders to ride and receive feedback from the judges. The cost to participate is \$50 for this clinic and you can sign

up at the ETS website. We will use the NCTC outdoor obstacle course, weather permitting or move to the covered arena if we have rain. **A big thank you to Becky Terrell, NCTC Equine Instructor, for coordinating and encouraging her students to be involved!**

On **Saturday, April 1st** the **ETS LRRETA Field Obstacle Challenge** will commence at 9 am. Ten obstacles will be set up in the field at the Elm Fork Trailhead of the Greenbelt just south of the Lake Ray Roberts Dam. The course will again be designed by **Sam Noble and Tracy Nelson!** Please go to [www.EquineTrailSports.com](http://www.EquineTrailSports.com) to register.

**Mom's on Main** has been contacted to provide breakfast and lunch which you can include on your entry. You may dry camp with your horses at the Elm Fork Trailhead at no charge both Friday and Saturday night, compliments for TPWD for this event. Generators will be allowed and

water will be provided for the horses as well as a public restroom (no showers).

Sunday, April 2, 2017 will be the **Equine Trail Challenge** starting at 8:30 am. The course of approximately 6 miles will be mostly shaded and will include different challenges than our first trail challenge event. This is a linear trail so the route will be both north and south. We hope to be able to travel down the 428 trail for some distance if trail conditions permit. Trail footing is mostly sandy, with a few rocky areas. There will be six (6) judged obstacles. Once again, park entry fees are waived for the event. As with all equine events, **Coggins are required.**

**Last year these events netted LRRETA about \$2,000 and these funds are needed to finish projects underway and meet the match on our new grant.**



## LRRETA Equine Master Plan Committee Meeting January 22, 2017 at Prairie House Restaurant



### **Purpose of this Committee:**

Develop a work plan document, in conjunction and collaboration with TPWD & USACE, outlining the goals and commitment of the Lake Ray Roberts Equestrian Trails Association regarding the maintenance of existing trails and further development of the trail system as input for the upcoming review/revision of the Lake Ray Roberts Master Plan.

Other special interest groups such as environmentalists, conservationists, bicyclists, hikers and hunters will also lobby to forward their agendas. It is important that LRRETA remains a strong, unified, committed voice on behalf of the equestrian community during the review of the LRR Master Plan.

It is also important that LRRETA continues to build, enhance and maintain the relationships we have established with TPWD and USACE. We will formulate both short term and long term plans, periodically conferring with TPWD and USACE to ensure the direction, methods and scope are in agreement.

The work plan document will be broad and general in scope with addenda for details. For example, TPWD wants certified volunteers for project implementation, but has not yet developed the specified criteria for certification. Those criteria would constitute an addendum. A roster of certified volunteers, to be updated annually, would be another addendum.

Committees will be formed at a later date: Planning Committee, Maintenance Committee and Development Committee, to include members of larger oversight groups. For example, the Development Committee could include a representative of TXDOT for applicable future projects.

### **Priorities:**

- Re-open the full 26 miles of existing trails from Hwy 380 north
- Work with Pilot Point to study the feasibility of reopening the Sam Garrett Memorial Overlook on FM 455 as well as purchasing land that would extend the trail to the Square in Pilot Point
- Add trails north to Whitesboro/Gunter

### **Document Structure:**

- Introduction — who is LRRETA, Mission Statement
- Purpose of Plan – include history of trails, challenges of weather, erosion, etc. Establish LRRETA's intent to be a viable and ongoing advocate for trails.
- Cooperators in Plan – TPWD, USACE, counties, Greenbelt Alliance – acknowledge all entities and their concerns.  
Key people (others to be added):  
Rob Jordan, USACE; Mark Stewart, TPWD; Jennifer Barrow, TPWD biologist
- Other associations – adjoining landowners – acknowledge concerns. Suggest mutually beneficial ideas: conservation easement for landowners – tax exemption; fire break (easement) that could be used as seasonal trails – promote as a safety feature.
- Existing 26 miles Trails & Facilities – address maintenance, TPWD certification, trailheads, camping
- Trail Development – our pie-in-the-sky desires for the future. Show continuity, future vision.
- Projects & Grants
- Association Coordination – Share our plan with TTPA, CTETA, TETRA, possibly Caddo to show shared benefit
- Year-end reports (get feedback at LRRETA annual meeting first) for annual coordinating meeting with co-op partners, review plan, make changes

Committee members Carol Nichols, Tracy Matern, Chuck Manning, Ken Podborny and Leah Fry were in attendance. Ken Podborny is finalizing draft and will be circulating to membership for review and approval.

# NCTC Conducting Free\* Fecal Egg Counts

North Central Texas College's Equine Program students are conducting fecal egg counts in an effort to assist local horse owners in effective parasite control in light of developing concerns regarding parasite resistance to current anthelmintics (dewormers) available. It is recommended that owners have a fecal egg count performed on their horse(s) just before worming and two weeks after.

Service is provided at the NCTC Equine Center in Gainesville and is performed by students acquiring their Equine Science Degree, under the guidance of an Equine Program Instructor.

### Instructions for Sampling:

The Paracount-EPG™ fecal analysis kit with use of the modified McMaster egg counting technique is

used to yield a quantitative egg count on a specific volume of manure.

Two to three fecal balls per horse are needed and should be sealed in an airtight plastic baggie. For herd assessment, samples should be taken from at least 10% of herd individuals (i.e. 50 head - 5 individual samples assessed). Samples need to be fresh, and kept cold to get the most accurate count possible.

Manure samples may be dropped off at the NCTC Equine Center Monday-Friday from 8 am to 6 pm. Place samples inside the brown refrigerator left of the stocks in the first red/white metal barn inside the gate, on the right. Please mark each bag with your name and contact information as well as the horse's name, date, and time of sample

collection. If available, date of last deworming and anthelmintic used would be helpful. You will receive notification of the results as soon as possible!

\*Donations received for the service will support the equestrian teams, and are greatly appreciated. Checks should be made out to the NCTC Equine Excellence Fund. Donations can be mailed, or left with the sample.

### Contact Information:

Becky Terrell

Email: [bterrell@nctc.edu](mailto:bterrell@nctc.edu)

Phone: (940) 668-7731 ext.4372 OR

Cell: (940) 390-5532

1525 West California Street  
Gainesville, TX 76240

And speaking of poop ...

# SCOOP YOUR POOP!



Whether you're parked  
on concrete or in the grassy areas,  
**CLEAN UP AFTER YOUR HORSE!**  
Put manure back in your trailer or in the dumpster.

## March Stockyards Ride a Success!

On a balmy Saturday, March 4<sup>th</sup>, LRRETA members and Cross Timbers Equestrian Trail Association (CTETA) members joined together for a ride on the Trinity Trails starting from the trailhead at NE23rd Street in Ft. Worth. We had eleven participants and we all enjoyed the barbecue at Risky's after the ride. For many of the horses, it was their first time to "town" and experienced many new sites and things they have had never seen, but they all handled it in stride! These things included: a petting zoo, train tracks and trains, wooden bridges over streams that were quite high, fast moving bicyclers, and underpasses with lots of cars moving on them. Luckily we got back into the Stockyards just after the gunfight! Robin Bird with CTETA was our trail boss and we appreciate his willingness and patience to lead the ride. A big thank you to CTETA/LRRETA member Diana Hobbs who got her food early and ate at the truck while keeping an eye on all the horses tied to trailers!

It was a fun ride and perhaps we should make it an annual event! Those attending were Diana Hobbs, Linda Moore, Robin and Diana Hood, Earli Price, Melani Graf, Maybeth Nunn, Alanna Sommers and her granddaughter Jocie Everett, Jim Featherstone, and Sylvia Harmon. Yee Hah!



## Jeffrey A. Glover Equestrian Trail Fund



Jamie Erbes established the Jeffrey A. Glover Equestrian Trail Fund to continue her late husband's legacy and love of horseback riding. The fund will support development and maintenance of North Texas equestrian trails for the enjoyment of generations to come.

To donate online:

<http://www.JeffGloverTrailFund.com>

To donate by mail:

Jeffrey A. Glover Equestrian Trail  
Fund  
CharitySmith Nonprofit Foundation  
13100 Filly Lane  
Truckee, CA 96161

This is a great way to honor our friend and help our trails!



## Rangers Express Concern About "Trail Creep" at Lake Ray Roberts

The rangers at Lake Ray Roberts State Park have asked equestrians to be aware of and not contribute to "trail creep" along our beautiful trails.

"Trail creep" occurs when equestrians go around rather than through muddy areas on the trail, effectively widening the trails at these points and making it increasingly difficult for the rangers to maintain these areas.

Please stay on the trail!

*Photo by Carol Nichols*

## REGISTER FOR THE Ray Roberts Lake Obstacle & Trail Challenge April 1-2, 2017 Aubrey, TX

Saturday

**Field Obstacle Course  
10 Obstacles**

Sunday

**6 Mile trail Challenge  
6 Obstacles**

*See page 8 for details.*

# 2017 Recreational Trails Grant

by Tracy Matern, Grant Co-Chairman

On January 31, 2017, we applied for another Recreational Trail Grant from Texas Parks & Wildlife. \$38,570 was requested for materials and equipment for renovating the trail from the current closure point all the way to US 380. These sections of the trail are currently closed due to damage from flooding. We are using funds from our current 2014 grant to repair from the current closure point to the FM 428 trail head but if these funds are not sufficient we hope to use funds from this grant. With an eye towards long-term longevity, the Park Management has recommended materials which should help stabilize the trail from future erosion.

\$66,820.32 was requested for improvements to the Blue Stem trailhead. These include covered pens in the day use area, a rinse rack, and hitching posts. By far the most costly item in this section of the request is the cost of running water lines under the road and sidewalks to the pens and rinse rack.

\$26,620 was requested for equipment to help us maintain the trail. This includes two UTVs with trailers, chainsaws, pole saws and safety education.

\$1,000 was also budgeted for signage.

Trail Renovation . . . . .	\$38,570.00
Blue Stem Trail head Improvements . . . . .	66,820.32
Trail Maintenance Equipment. . . . .	26,620.00
<u>Signage . . . . .</u>	<u>1,000.00</u>
Total	\$133,010.32

Of this total, GBA and LRRETA will be responsible for a 20% match which is \$26,602. We can earn this money by volunteering to help with the trail restoration, helping assemble and paint the pens, rinse rack and hitching rails or by donating materials and equipment. Each hour of volunteer time counts \$21.35 towards our match.

We will be notified whether our application has been accepted for funding in late summer or early fall 2017. Actual trail building and renovation is scored higher than improvements to trail heads. There is no guarantee we will be funded, but keep your fingers crossed.

As part of this application process, GBA had to register on the US Federal Government’s SAM system, the System for Account Management.

Recreational trail grants do not fund camping facilities so we are unable to apply to this program to add electric to our Blue Stem camping sites. We are searching for grants which might help us finance this. If you know of any such grants, please contact me at [tmatern1945@gmail.com](mailto:tmatern1945@gmail.com) or 214-392-2288. As always, your membership and donations help us maintain the trail and provide facilities and we are very appreciative!

**A big thank you to Sanger Hardware for donating a pallet of Quikrete for erecting the new signage posts. Donations help with our match funds on grants!**



# LRRETA

## Branded Merchandise

LRRETA has paid to have our logo digitized. Supply your own clothing items and member Robyn Pucci will do embroidery for \$8 per item, or you can order shirts from the Norman Roscoe catalog available online or from Linda Moore.

Items can be brought to our meetings, held the first Tuesday of each month at Ernesto's in Pilot Point at 6:30.

Call Linda with questions (940) 206-9355.



### Lake Ray Roberts Equestrian Trails Association (LRRETA) Patron Application Form

MEMBERSHIP and PATRONS - Membership in LRRETTA and Greenfest is complimentary. Supporters of the equestrian/hiking trail are PATRONS. Please support your trail by becoming a PATRON and attending the annual Greenfest events!

Single Patron \$25 annual    
  Household Patron (max 4 people) \$75 annual    
  Lifetime single Patron \$250 (one time)    
  Lifetime Household \$750 (one time)

Special Discount! \$40 (\$10 savings) If you join both LRRETA and CTETA!  
 Please indicate if you wish to join both groups or if you are already a member of CTETA.

FULL NAME\* \_\_\_\_\_

BUSINESS NAME\* (optional) \_\_\_\_\_

Address\* \_\_\_\_\_ City\* \_\_\_\_\_ ST\* \_\_\_\_\_ ZIP\* \_\_\_\_\_

Cell Phone\* \_\_\_\_\_ Home phone (optional)\* \_\_\_\_\_

Email\* \_\_\_\_\_

Additional Patrons (fill in if checking Household Patron):

FULL NAME\* \_\_\_\_\_

FULL NAME\* \_\_\_\_\_

FULL NAME\* \_\_\_\_\_

*PLEASE MAIL CHECK WITH PATRON DUES OR DONATIONS TO:  
LRRETA, 2459 West Blackjack Road, Aubrey, TX 76227*

**State and Federal grants for our trails require 20% to 50% private funds as a "match."  
We need your dues and donations to access grant money!**

\*LRRETA does not share Patron or Donor information

### Please also consider joining our sister trail groups:

Join Texas Equestrian Trail Riders Association (TETRA) <http://tetra.memberlodge.org/page-201911>

Join Cross Timbers Equestrian Trails Association (CTETA) <http://www.cteta.org/Form-Membership-2011.pdf>